

SCHOTTKY BARRIER DIODE

VOLTAGE RANGE: 40V PEAK PULSE POWER:250mW

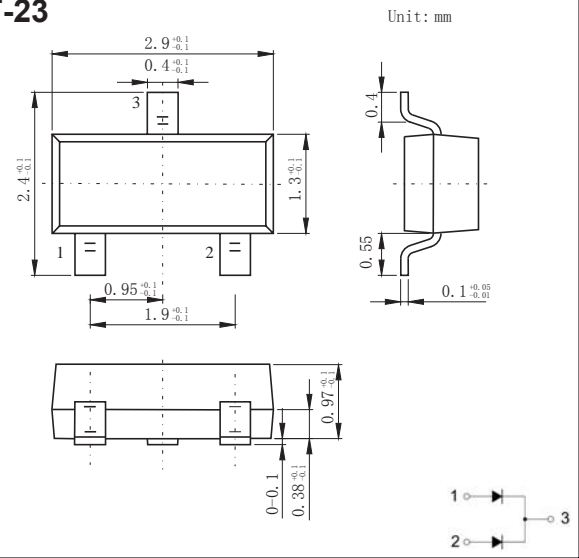
FEATURES

- Small Surface Mounting
- Type Low VF
- High Reliability
- Low Power Rectification

MECHANICAL DATA

- Case: SOT-23 Small Outline Plastic Package
- Polarity: Color band denotes cathode end
- Mounting Position: Any

SOT-23



MAXIMUM RATINGS AND CHARACTERISTICS

Ratings at 25°C ambient temperature unless otherwise specified

Symbol	Parameter	Value	Unit
V_R	Continuous Reverse Voltage	40	V
I_O	Continuous Forward Current	100	mA
I_{FSM}	Non-repetitive Peak Forward Surge Current @t=8.3ms	1	A
P_D	Power Dissipation	250	mW
$R_{\theta JA}$	Thermal Resistance from Junction to Ambient	400	°C/W
T_j	Junction Temperature	125	°C
T_{stg}	Storage Temperature	-55~+150	°C

Electrical Specification ($T_A=25^\circ\text{C}$ unless otherwise specified)

Parameter	Symbol	Test conditions	Min	Typ	Max	Unit
Reverse voltage	$V_{(BR)}$	$I_R=100\mu\text{A}$	40			V
Reverse current	I_R	$V_R=10\text{V}$			30	μA
Forward voltage	V_F	$I_F=100\text{mA}$			0.55	V
		$I_F=10\text{mA}$			0.34	
Total capacitance	C_{tot}	$V_R=10\text{V}, f=1\text{MHz}$		6		pF

MARKING: D3L

RATINGS AND CHARACTERISTIC CURVES

